

# MUMBAI PARK

THE UNDER GROUND CAR PARK

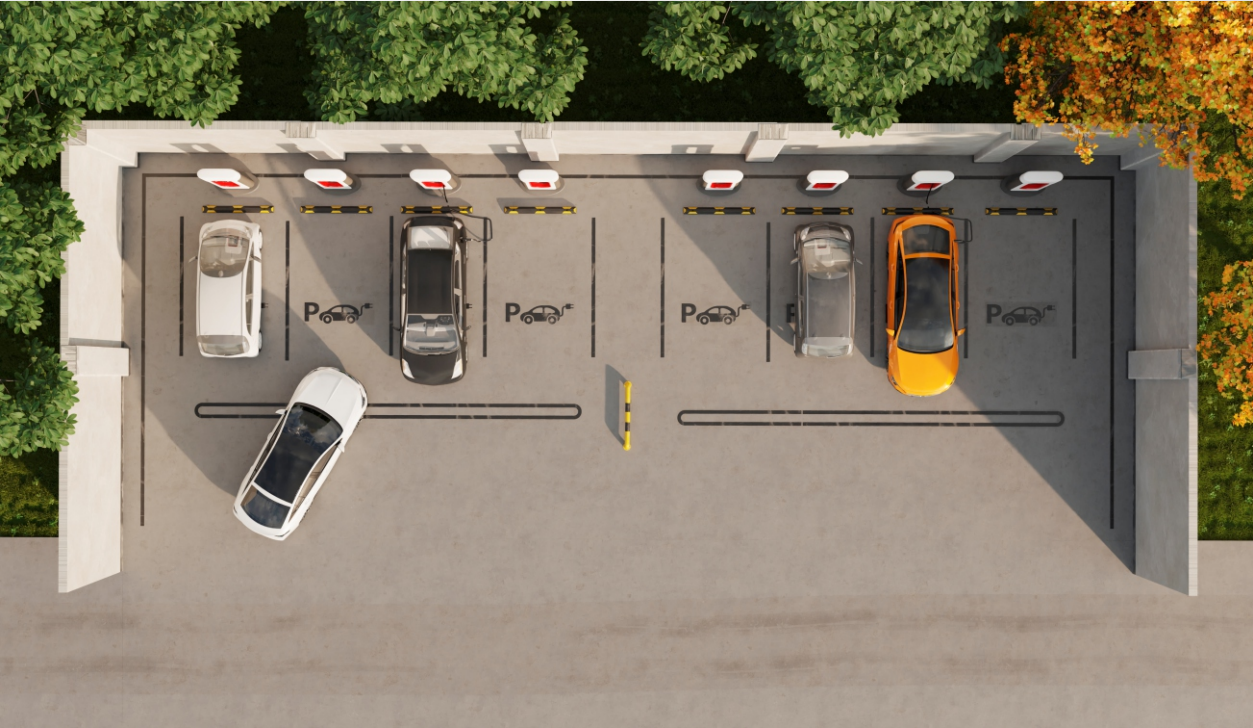


# INDIA, FACES REAL SPACE CONSTRAINT FOR CAR PARK





# PARKING PROBLEM IN MUMBAI



**MUMBAI**  
**PARK**

THE UNDER GROUND CAR PARK





- Mumbai is confronting the biggest problems in the context of space for parking the vehicle.
- Number of vehicles are increasing over the number of total heads of the family
- Parking system in India is awfully failing to meet the current requirements.
- Almost 40% of the roads are being used for parking in normal working days.







The situation is likely to worsen as there are much more vehicles available in comparison to available space. Mumbai city is being considered as one of the worst living options by people.



# SOLUTION

# MULTI LEVEL PARKING



## WHAT IS MULTI LEVEL CAR PARKING?

There two types of Multi-Level car parking

- 
- A) Conventional**
  - B) Automated**





# AUTOMATED MULTI LEVEL CAR PARKING



Automated multilevel car parking is completely automatic & there is no involvement of human beings





Looking at  
Mumbai's current  
Geographic and  
parking situation,  
Underground  
Automated  
Parking is  
advisable.





# BENEFITS OF UNDERGROUND AUTOMATED PARKING



- Small ground area & fast construction period.
- Easy access to vehicles and high safety.
- The construction does not need to slope, does not affect the safety of the surrounding building structure, shortens the construction period & reduces environmental pollution.
- In large cities with high building density, the location of visible needle insertion can be selected, which is especially suitable for the gap green space & atrium open space of old residential areas & urban corner green space.





- This underground Model Automated Parking System using robotic technology with low ceiling requirement, high parking density.
- This system is very safe, reliable, fully automated and highly efficient.
- It has an automatic alignment and can be rotated during moving



**The entire project will be financed through the grant of rights adhering to a BOT (Build-Operate-Transfer) Arrangement**



**MUMBAI  
PARK**

THE UNDER GROUND CAR PARK

